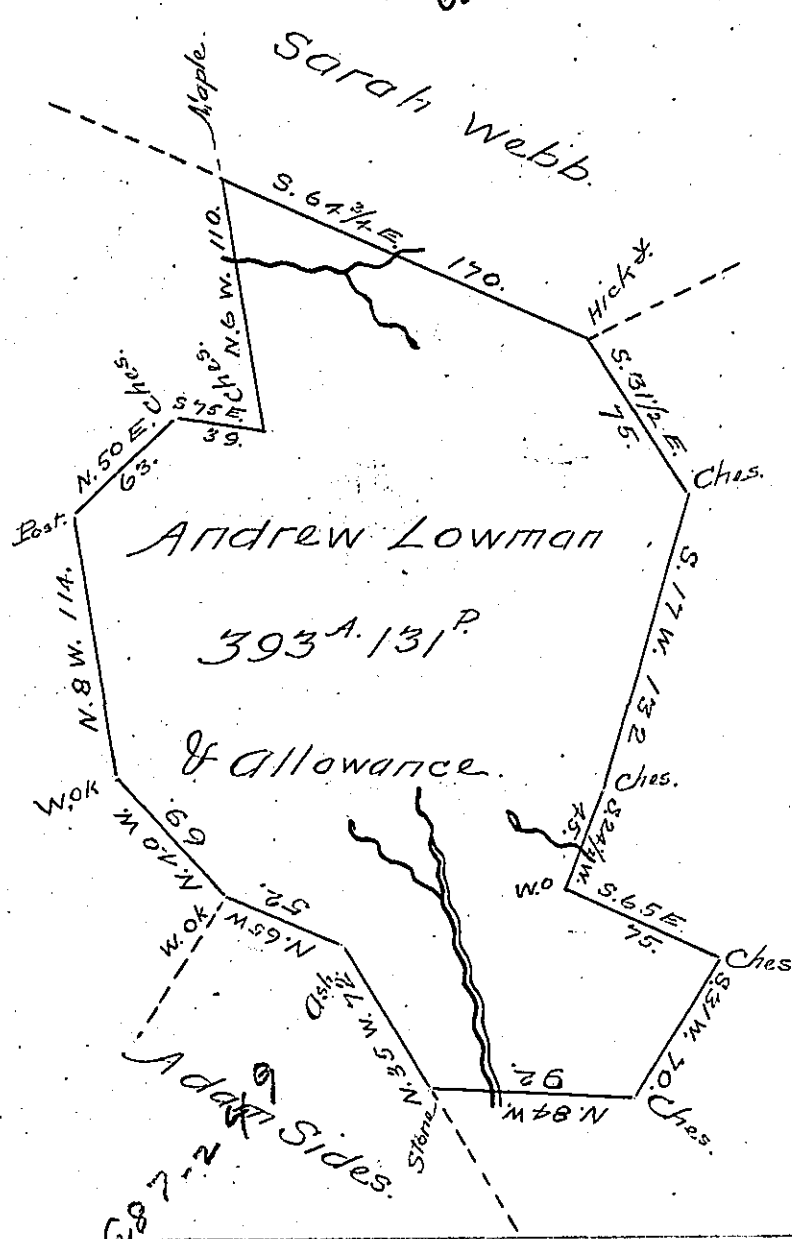


2-54-28

602-2223

Charles Deal of Robt Watt.



John Makin. C 82-1218

607-2

August 15th 1838.

Surveyed to Andrew Lowman the above described tract of three hundred and ninety three acres and one hundred and thirty one perches of land and allowance of six per cent adjoining land of Adam Sides Sarah Webb and others.

Including an Improvement. Situate on the Chesnut ridge in Brushvalley Township Indiana - County By warrant of the 19th day of January A. D. 1838.

Wm. Evans D.S.

To John Taylor Esqr. }
 Surveyor General - }

IN TESTIMONY that the above is a copy of the original remaining on file in the Department of Internal Affairs of Pennsylvania, made conformably to an Act of Assembly approved the 16th day of February, 1833, I have hereunto set my Hand and caused the Seal of said Department to be affixed at Harrisburg, this 17th day of October 1905.

Loacis P...
 Secretary of Internal Affairs.